

International One Design Class
2011 World Championship
June 11 - 17, 2010
Eastern Yacht Club, Corinthian Yacht Club
Marblehead MA

Organizing Authorities: Eastern Yacht Club and the Marblehead International One Design Fleet.



SAILING INSTRUCTIONS

1 RULES

- 1.1 The Regatta will be governed by the *Racing Rules of Sailing 2009-2012*
- 1.2 The prescriptions of US Sailing will not apply except its prescriptions to Rule 68 (Damages) and Rules 76.1 and 76.3 (Exclusion of Boats and Competitors) which are attached to these sailing instructions in Appendix A.
- 1.3 The IOD World Class Association Championship Regulations apply.
- 1.4 SI 8, Schedule of Races, modifies Notice of Race 4, Schedule.
- 1.5 Subject to the provisions of SI 24 and SI 25, the boat rotation sequence may be adjusted by the Marblehead Fleet Technical Committee (MTC) and no redress for such adjustment will be granted to any skipper. Should any such adjustment require a competing skipper to sail his or her personal boat, this shall not be grounds for redress. This modifies IOD Championship Regulation 6.3.b.ii
- 1.6 The authority for MTC decisions shall be the Regatta Chair.

2 NOTICES TO COMPETITORS

Notices to competitors will be posted on the Official Notice Board at the Eastern Yacht Club, located across from the reception desk in the main clubhouse.

3 CHANGES TO SAILING INSTRUCTIONS

Any change to the sailing instructions will be posted before 0900 on the day it will take effect. A change to the schedule of races will be posted by 1900 on the day before it will take effect.

4 PARTICIPANTS

- 4.1 Skippers and Co-skippers must meet all the eligibility requirements described in the IOD Championship Regulations.
- 4.2 Change of Crew - Helmspersons shall submit the names of their crew before the start of the first race of the regatta. Thereafter, changes in crew members cannot be made without the written consent of the International Jury and then, only for cause.

5 BOATS

- 5.1 Boats will be provided for all competitors. Boats will be rotated after each race in accordance with a rotation draw that will be held at the competitors' meeting.
- 5.2 Boats will be raced "as is". The upper and lower shrouds, headstay, and mast chocking shall not be adjusted in any way by any competitor. All other fittings or equipment designed to be adjusted, including jumper stays, may be adjusted within the limits provided. Competitors may not seek redress for errors or omissions of the organizing authority in preparing the boats. (Modifies Rule 62.1)
- 5.3 All equipment provided with the boat for sailing purposes shall remain in the boat while afloat.
- 5.4 Using shrouds as a way of supporting a crewmember's weight outboard of the shrouds is prohibited.
- 5.5 The following are permitted:
 - a) A compass may be tied or taped to the hull or spars.
 - b) Wind indicators, including yarn or thread, may be tied or taped anywhere on the boat, but no hole shall be made in any sail for any purpose.
 - c) Tape, except duct tape or other cloth-backed tape, may be used anywhere above the waterline except on brightwork. All tape shall be completely removed before leaving the boat.
 - d) Competitors may use their own spinnaker sheets and launcher/turtle.
- 5.6 No marks should be made on the boats with pencils, markers or grease pencils, unless they are completely washable, leaving no trace of their use. Competitors will be responsible for the removal of any markings or tape left on the boats, or any damage to the finishes caused by the application of markings or tape.
- 5.7 Hulls may not be scrubbed, washed, wet-sanded, or otherwise treated below the waterline at any time.

6 SAILS

- 6.1 Each boat will have a mainsail and jib which shall remain aboard.
- 6.2 A spinnaker will be provided to each team at the Skippers' Meeting. The spinnaker shall remain with that team for the entire regatta.
- 6.3 No other sails may be used except by permission of the Technical Committee and with the written authorization of the International Jury. The Jury may issue this authorization retroactively.

7 SIGNALS MADE ASHORE

- 7.1 Signals made ashore will be displayed from the flagpole at the Eastern Yacht Club.
- 7.2 When flag **AP** is displayed ashore, boats shall remain on moorings.
- 7.3 When flag **AP** is lowered, the Warning signal will be made not less than 60 minutes later.

8 SCHEDULE OF RACES

- 8.1 Competitors' meeting and boat draw Sunday June 12 at 0830, Eastern Yacht Club (changes the time stated in the NOR).
- 8.2 A Practice Race is scheduled for 1100 on Sunday prior to championship racing (changes the time stated in the NOR).
- 8.3 A total of nine (9) championship races are scheduled, two races per day beginning on Sunday June 12, through Friday June 17. Wednesday, June 15 is scheduled as a makeup day.
- 8.4 The scheduled warning time for the first race each day is 1100.
- 8.5 No warning signal will be made after 1500 on Friday.

9 CLASS FLAG

The class flag will be a white rectangle with **IC** logo.

10 RACING AREAS

- 10.1 Illustration A shows the location of the racing area.
- 10.2 The Race Committee will communicate to competitors by VHF channel 05.

11 THE COURSE –

- 11.1 Illustration B shows the courses available to the Race Committee, including the approximate angles between legs, the order in which marks are to be passed and the side on which marks are to be left. Windward/Leeward courses may incorporate a Windward Offset Mark and may, at the discretion of the Race Committee, incorporate a Leeward Gate. When used, the offset mark will be in conjunction with mark 1 and will be placed at a right angle to the weather leg. The leeward mark may be a single mark or a gate. If a single mark is set, it shall be rounded to port. If a leeward gate is set, boats shall sail between the gate marks from the direction of the previous mark, rounding to either port or starboard.
- 11.2 No later than the warning signal, the course pattern and the approximate compass bearing from the starting line to Mark 1 will be displayed in the forward rack at the stern of the Race Committee signal boat. The approximate distance from the starting line to Mark 1 will be displayed in the aft rack of the Race Committee signal boat.

12 SPINNAKER RESTRICTIONS

When Code Flag 'O' is displayed with the warning signal, spinnakers shall not be hoisted during that race.

13 MARKS

- 13.1 The Windward mark(s) and leeward mark(s) will be yellow tetrahedrons.
- 13.2 The Offset mark (SI 11.1), when used, will be a red tetrahedron.
- 13.3 A Change of Course mark will be identified by a black band. A subsequent change will revert to the original mark (unbanded).

14 THE START

- 14.1 Races will be started using the Rule 26 sequence. The starting line will be between a staff with an orange flag on the Race Committee Signal Boat and the course side of the starting mark.
- 14.2 Approximately one minute prior to the WARNING signal of each race the Race Committee will make a short series of sound signals.

15 RECALLS

In the event of an individual recall, the Race Committee will endeavor to hail on VHF channel 5 the sail numbers of any boat or boats that are OCS. Failure of a boat to see or hear her recall notification and the timing and order of such hails, or the length of time it takes to make a notification on the VHF radio will not be grounds for redress. (changes Rules 29.1 and 60.1b).

16 CHANGE OF COURSE AFTER THE START

- 16.1 Changes of course will be signaled in accordance with Rule 33. However, if the distance of a leg of the course changes, the race committee will display the approximate distance to the new mark on a white board or signal rack. (Modifies Rule 33 (b))
- 16.2 If a mark is changed the new mark will have a black band. If a new Mark 1 is set, a new offset mark may also be set. If a gate is changed, the new gate mark(s) will have black bands.
- 16.3 When in a subsequent change a new mark is replaced, it will be replaced by an original mark.

17 SHORTEN COURSE

The Race Committee may shorten course for any reason provided however that a minimum of three (3) legs of the course have been completed (changes Rule 32.1).

18 THE FINISH

The finishing line will be between a staff displaying an orange flag on the Race Committee Signal Boat and the nearest mark of the course.

19 TIME LIMIT

The time limit for a race is 2-1/2 hours. Boats failing to finish within 30 minutes after the first boat sails the course and finishes, or within the time limit, whichever is later, will be scored "Did Not Finish" without a hearing. (changes Rules 35, A4 and A5)

20 PROTESTS AND REQUESTS FOR REDRESS

- 20.1 Protest forms are available at the reception desk at the Eastern Yacht Club. Protests shall be delivered to the main reception desk at the Eastern Yacht Club within the protest time limit. Time limit is 60 minutes after the race committee signal boat docks at the Eastern Yacht Club. The time limit will be posted on the official notice board.
- 20.2 Notices of protests will be posted within 30 minutes of the protest time limit to inform competitors of hearings in which they are parties or named as witnesses. Hearings will be held as soon as possible in the Model Room of the Eastern Yacht Club.
- 20.3 Notices of protests by the Race Committee or Jury will be posted before the expiration of the protest time to inform the boat(s) involved.
- 20.4 On the last day of the regatta a request for redress or for reopening a hearing shall be delivered:
 - a) within the protest time limit if the party requesting reopening was informed of the decision on the previous day;
 - b) no later than 30 minutes after the party requesting reopening was informed of the decision on that day. (Changes Rule 62.2 and Rule 66)

21 SCORING

- 21.1 Four races are required to be completed to constitute the World Championship.
- 21.2 The Low Point Scoring System (Rule A4.1) will apply except that points will accrue to teams.
 - a. If six or more races are completed, a team's series score will be the total of its race scores excluding its worst score.
 - b. If five or fewer races are completed, a team's series score will be the total of its race scores.
- 21.3 The IOD Championship Regulations apply for all redress requests occurring as the direct result of a breakdown.
- 21.4 For the purposes of scoring a boat under SI 23.6, the average will be computed using all the Championship races sailed, except the race or races in question. (changes Rule 64.2.)

22 SAFETY REGULATIONS

- 22.1 Boats shall check-in on starboard tack astern of the RC Signal boat prior to the warning for each race. A boat failing to check in with the race committee signal boat in the racing area prior to the warning signal for a race may be penalized or scored DNS at the discretion of the jury. (Changes Rule A5)
- 22.2 A boat that retires from a race shall notify the race committee on VHF CH 05 as soon as possible.

23 BREAKDOWN

- 23.1 A boat suffering a breakdown shall fly a yellow flag at the first possible opportunity. Following the race a boat suffering a breakdown shall inform the Race Committee of their breakdown.
- 23.2 Breakdown scoring shall be at the discretion of the International Jury and will follow the procedures set forth in the Championship Regulations.

24. DAMAGE REPORTS AND PENALTIES

- 24.1 Submission of a Damage Report after each race by each team is mandatory.
- 24.2 The Damage Report will comprise a declaration on a form provided by the MTC to be signed after each race by each skipper, regardless of whether or not there is damage.
- 24.3 On this form each skipper shall EITHER declare that the boat he sailed bears no damage or performance-impairing condition, OR, fully declare to the best of his or her knowledge all damage or performance-impairing conditions including a description of all contact that occurred, however minor.
- 24.4 The Damage Report for a race followed by an on-the-water boat change shall be completed, signed and returned to the MTC Representative performing the boat change. The damage report for a race that is the final race of the day shall be completed, signed, and returned to the protest desk not later than the protest time limit.
- 24.5 The penalty for non-compliance will be DSQ at the discretion of the jury without a hearing.
- 24.6 If an untimely or inaccurate declaration or non-declaration causes the MTC to withdraw a boat from competition for repairs, and if there is no replacement boat, the skipper who last sailed the affected boat shall not compete in any further races until that boat or a replacement boat becomes available and that skipper will be scored DNC for those races not sailed. This provision overrides SI 25.6.c.
- 24.7 If there is unreported or incorrectly reported damage, it shall be subject to SI 24.5 and SI 24.6

25 SPARE BOATS AND DAMAGE

- 25.1 The ability of a boat to sail will be determined by the MTC at its sole discretion.
- 25.2 Decisions concerning the use of spare boats will be made by the MTC in conjunction with the International Jury and/or Race Committee.
- 25.3 If one boat becomes un-sailable, a spare boat will replace that boat in the schedule until the original boat is repaired. This will not be grounds for redress.
- 25.4 If more than 1 (one) boat becomes un-sailable and there are sufficient spare boats, the MTC will, at its discretion, determine which spare boat(s) will replace which original boat(s) in the schedule.
- 25.5 As un-sailable boats are repaired, they will be reinstated into the original schedule on the next day scheduled for racing to be sailed by the competitors originally scheduled. This will not be grounds for redress.
- 25.6 If there are more un-sailable boats than spare boats:
 - a Competitors already governed by SI 24.6 will remain so governed.
 - b. All competitors who are scheduled to sail boats that are declared to be un-sailable by the MTC, will drop out of that race until either the original boat is repaired or a spare boat is available.
 - c. Competitors prevented from racing through the provisions of SI 25.6.b will automatically receive average points redress for each race missed in accordance with SI 21.4

26 RADIO COMMUNICATIONS

While racing, a boat shall neither make radio transmissions or send email or text messages nor receive radio communications or receive email or text messages not available to all boats. This restriction also applies to mobile telephones and other handheld mobile devices. However, all boats shall have VHF radios capable of transmitting and receiving instructions (Channel 05). The RC intends to make advisory announcements on CH 05.

27 PRIZES

The following perpetual trophies will be awarded: Bjarne Aas Trophy: Presented to Class Champion, William E. John, Jr. Trophy: Presented to Yacht Club of Class Champion, Allegra Trophy: Presented to runner-up in Class Championship, Edinburgh Bowl: Presented to the third place in Class Championship, Outstanding Crew Award Presented to the most valuable crew member in the Class Championship regatta as determined by the WCA Officers. Keeper prizes will be awarded to the first place through fourth place teams.

ILLUSTRATION A SAILING AREA CHART

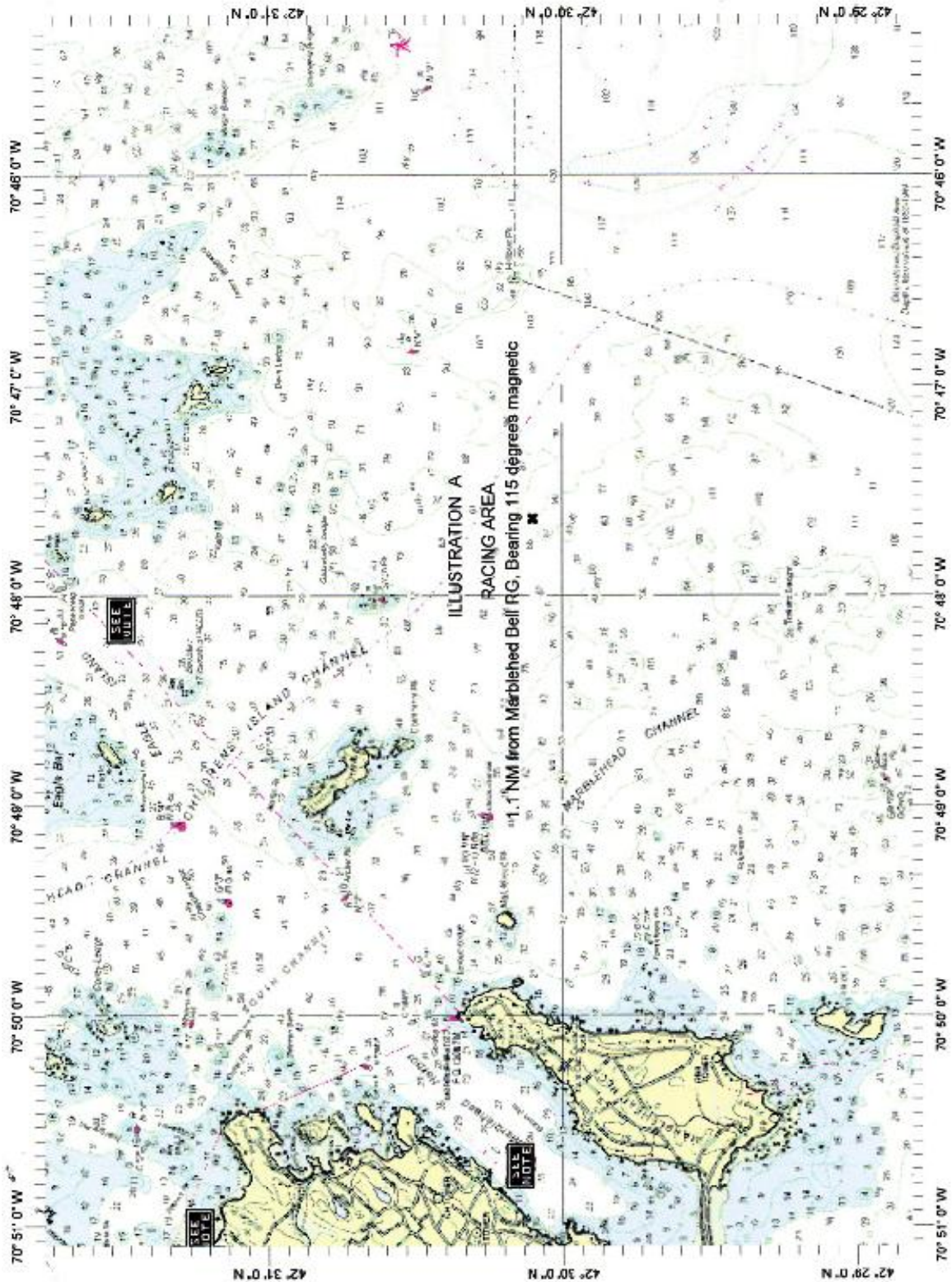


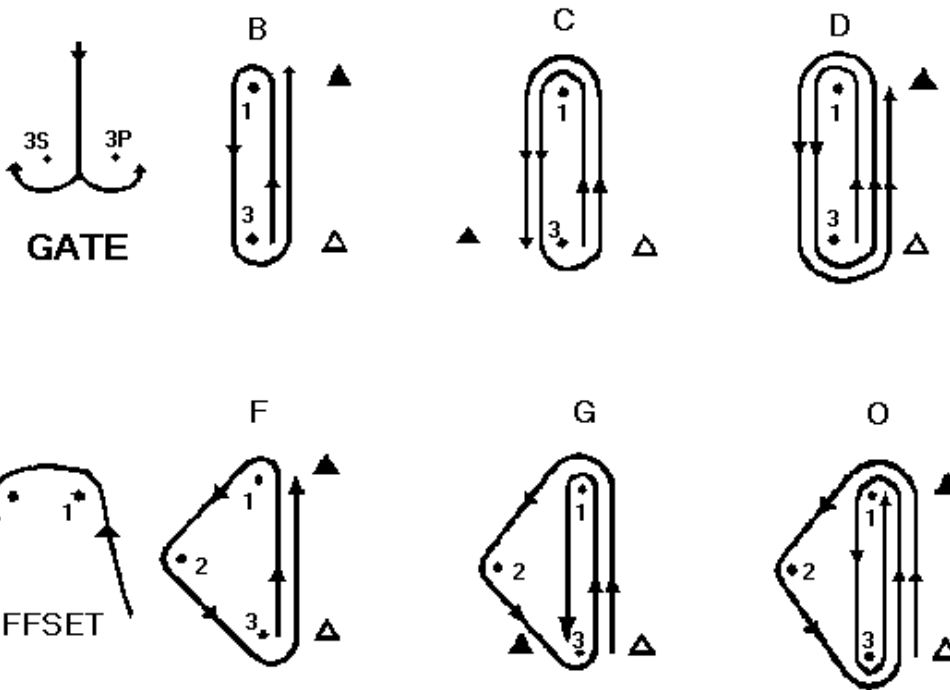
Chart Name: SALEM AND LYNN HARBORS MA
 Chart ID: 13275
 Top Left: 42° 29' 45" N 70° 51' 5" W
 Bottom Right: 42° 29' 48" N 70° 45' 17" W

© MAPTECH, INC.

ILLUSTRATION B COURSE PATTERNS



COURSE PATTERNS FOR CHAMPIONSHIP RACES



Leeward gates will consist of two marks: Boats shall sail between the two Gate marks from the direction of the last mark, rounding to either port or Starboard.

APPENDIX A - US Sailing Prescriptions:

Rule 68: After rule 68 add

US SAILING prescribes that:

(a) A boat that retires from a race or accepts a penalty does not, by that action alone, admit liability for damages.

(b) A protest committee shall find facts and make decisions only in compliance with the rules. No protest committee or US SAILING appeal authority shall adjudicate any claim for damages. Such a claim is subject to the jurisdiction of the courts.

(c) A basic purpose of the rules is to prevent contact between boats. By participating in an event governed by the rules, a boat agrees that responsibility for damages arising from any breach of the rules shall be based on fault as determined by application of the rules, and that she shall not be governed by the legal doctrine of 'assumption of risk' for monetary damages resulting from contact with other boats.

Rule 76.1 After rule 76.1 add

US SAILING prescribes that:

an organizing authority or race committee shall not reject or cancel the entry of a boat or exclude a competitor eligible under the notice of race and sailing instructions for an arbitrary or capricious reason or for reason of race, color, religion, national origin, gender, sexual orientation, or age.

Rule 76.3 Add Rule 76.3

76.3 US SAILING prescribes that:

A boat whose entry is rejected or cancelled or a competitor who is excluded from a race or series shall be, upon written request, entitled to a hearing conducted by the protest committee under rules 63.2, 63.3, 63.4 and 63.6.