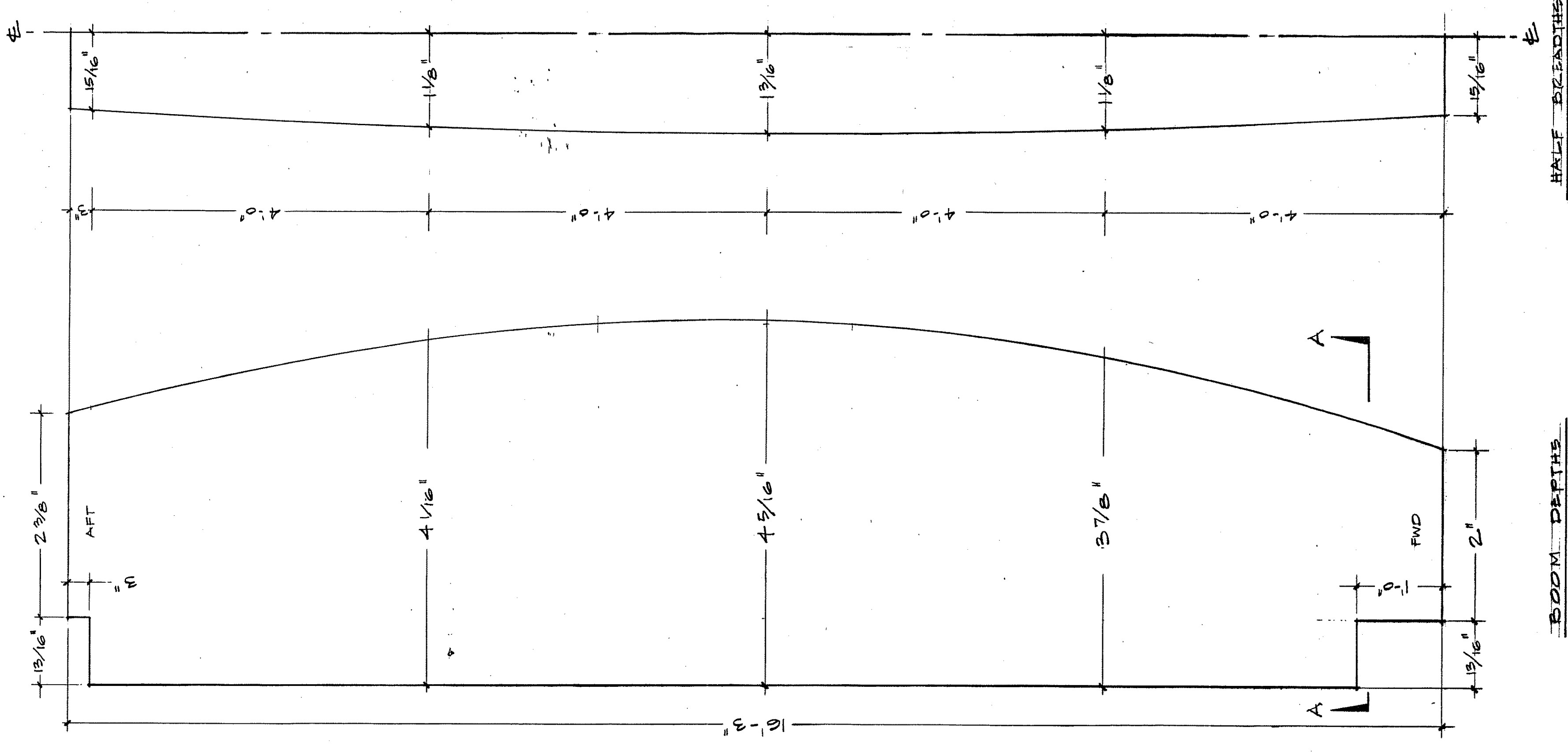
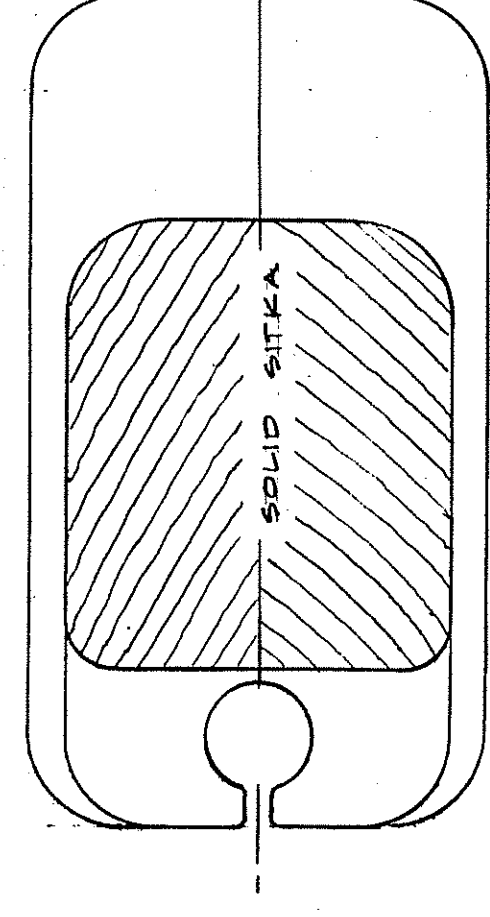


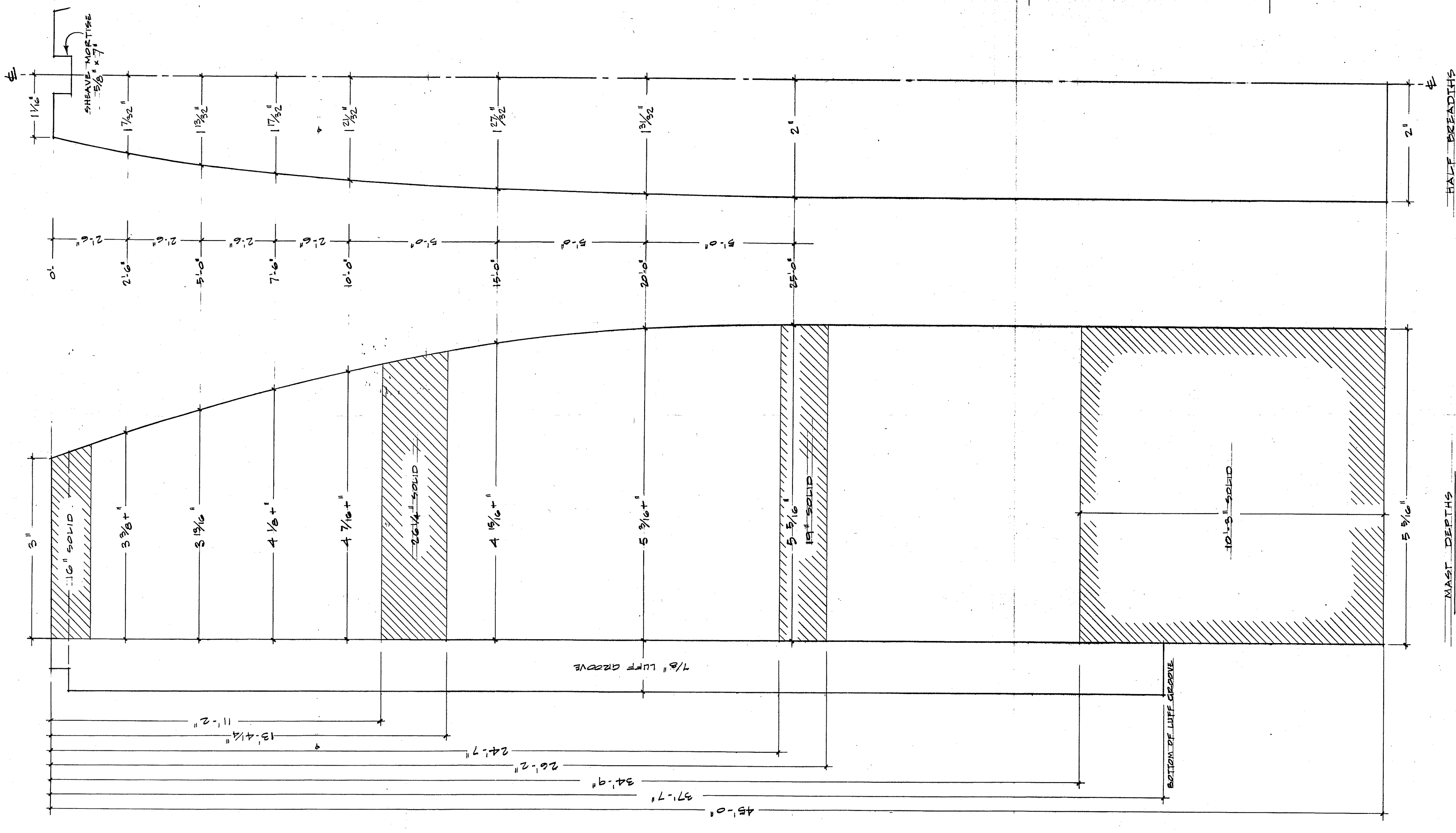
**SPINNAKER POLE**  
 LONGITUDINAL SCALE: 1" = 1'-0"  
 TRANSVERSE SCALE: FULL SIZE  
 MINIMUM WEIGHTS: BASE - 24 LBS; ALL PERMANENT FITTINGS - 40 LBS  
 16" L. LENGTH FROM CENTER OF TACK PIN TO CENTER OF OUTHAUL PIN



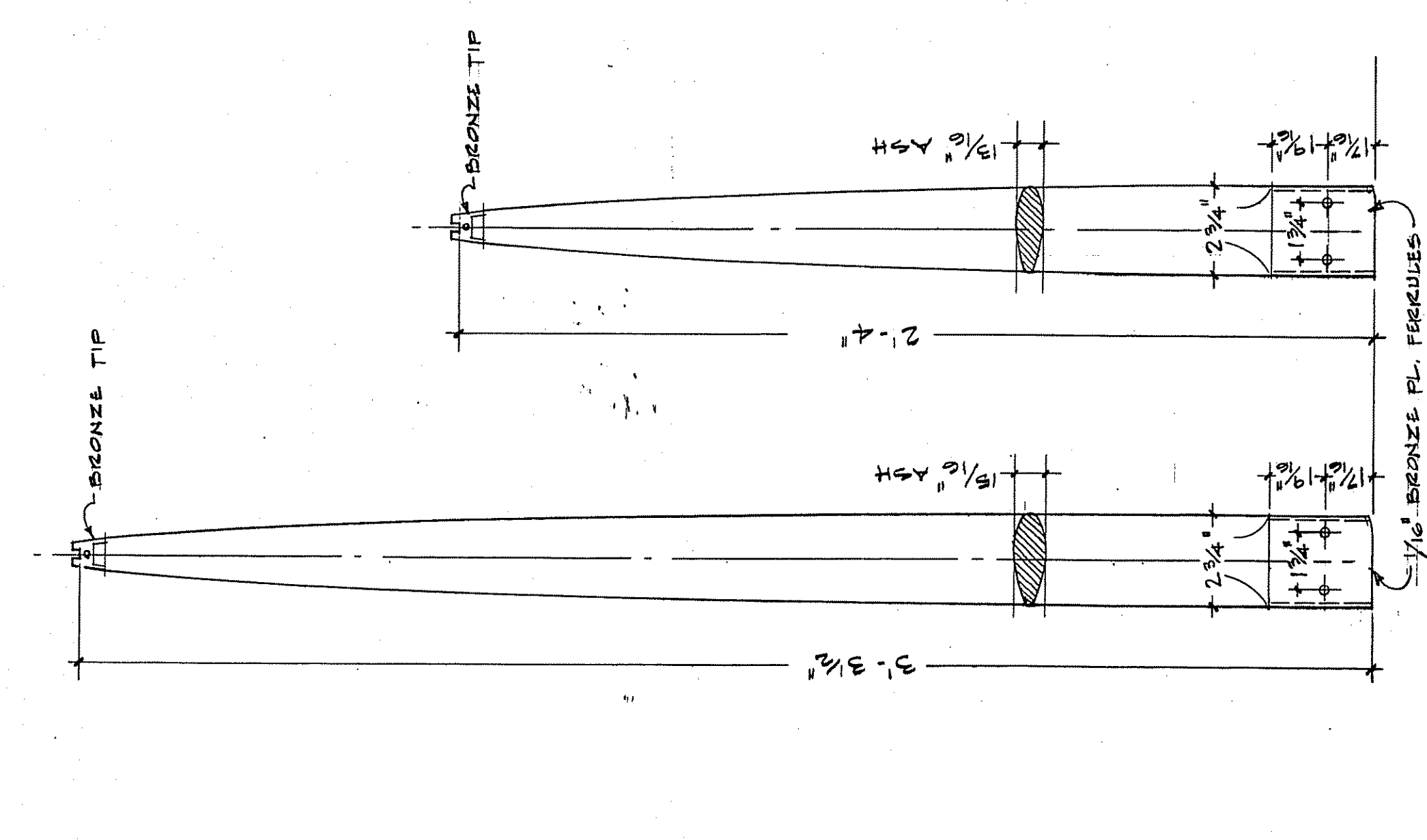
**BOOM**  
 LONGITUDINAL SCALE: 1" = 1'-0"  
 TRANSVERSE SCALE: FULL SIZE  
 MINIMUM WEIGHTS: BASE - 24 LBS; ALL PERMANENT FITTINGS - 40 LBS  
 16" L. LENGTH FROM CENTER OF TACK PIN TO CENTER OF OUTHAUL PIN



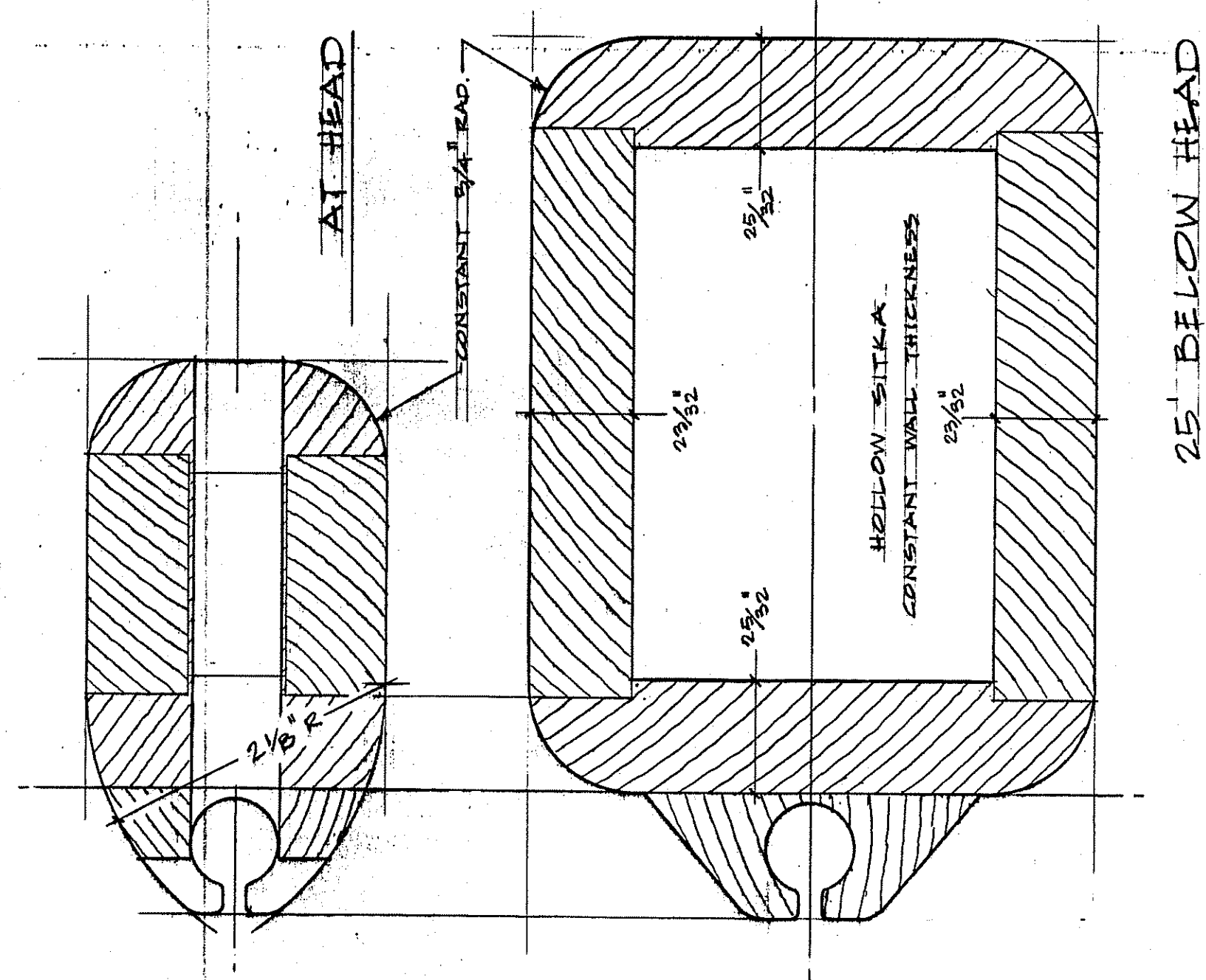
**BOOM SECTION A-A**  
 SCALE: FULL SIZE



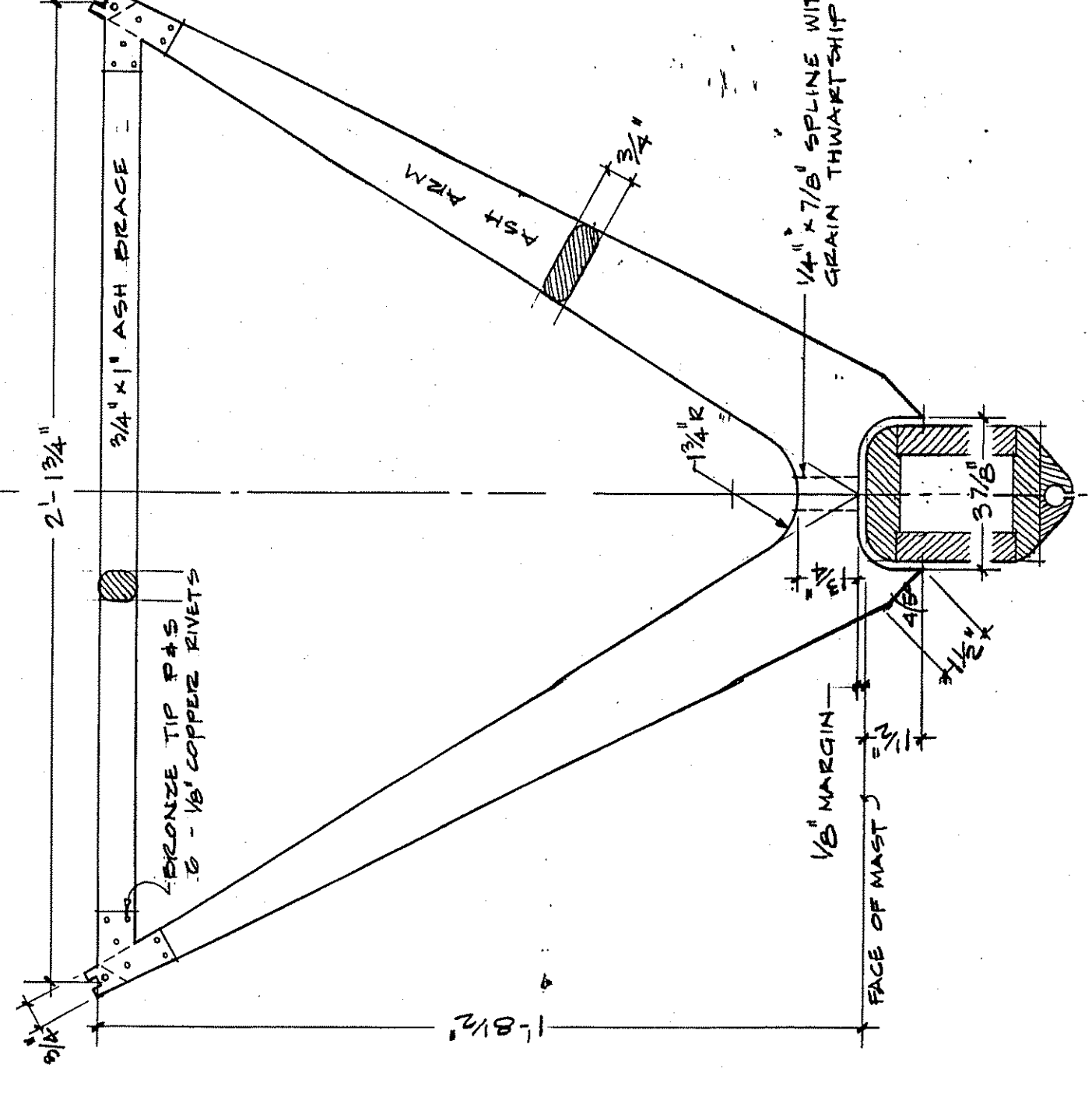
**MAST**  
 LONGITUDINAL SCALE: 1" = 1'-0"  
 TRANSVERSE SCALE: FULL SIZE  
 MINIMUM WEIGHTS: BASE - 110 LBS; WITH ALL FITTINGS, ACCESSORIES & RIGGING - 140 LBS  
 BALANCE POINT OF FITTED SPARE NOT LESS THAN 20" AFT. BELOW HEAD



**SPREADER DETAILS**  
 SCALE: 3/4" = 1'-0"



**MAST SECTIONS**  
 SCALE: FULL SIZE



**JUMPER STRUT DETAIL**  
 SCALE: 3/4" = 1'-0"  
 MINIMUM WEIGHT: 2 LBS

