



1. RULES: Races will be governed by the current Racing Rules of Sailing, the prescriptions of US SAILING, the rules of the participating classes (except as any of these are altered by these sailing instructions), and by these sailing instructions.

2. ENTRIES: All boats must be entered by a Fishers Island YC member (or for special events, by a member of a club who has filed a proper regatta entry form) who must sail aboard and be in charge of the boat during the race.

3. NOTICES TO COMPETITORS: Notices to competitors will be posted on the official notice board at the Yacht Club.

4. SAILING INSTRUCTION CHANGES: Any change in the sailing instructions will be posted on the official notice board two hours before the first warning signal on the day it will take effect, except that any change in the schedule of races will be posted by 1900 on the day before it will take effect.

5. SCHEDULE OF RACES: The race schedule will be as posted on the official notice board.

6. THE COURSE: Races shall be started in an area bounded by C "1" to the north, C "3" to the west, R "6" to the south, and C "5" to the east. Alternatively, with the hoisting of code flag L and one sound signal, the committee boat may move the starting area west of R "2". Courses may be designated using code flags or a course board. Courses may be changed and the display may be changed from flags to course board or vice versa prior to the Warning Signal for each class. SI

12 will apply when courses are changed prior to a warning signal

6.1 Courses other than those described in SI 6.2 will be posted on a course board with the marks listed in the order of rounding using the letter designations shown on Attachment A. Marks, "B," "F," "G," "H," "J," "P," "R," "U," are temporary club marks that will be set when needed in the approximate positions shown on Attachment A. Marks will be left to Port unless a mark letter is displayed on the course board accompanied by a letter S, on a green background, or the letter is circled, in which case the mark will be left to Starboard. The start/finish line will be between a set mark and an orange flag on the committee boat.

6.2 Windward/leeward courses may be designated by displaying code flag "W", "M," or the code flag for marks located on Attachment A over a numeral pennant that indicates the number of legs to be sailed. All marks will be left to Port.

For "W" courses the starting line shall be between an orange flag on the race committee boat and a set mark that will also be the leeward mark. The finish line shall be between the orange flag on the race committee boat and the leeward mark for a course with an even number of legs, or the windward mark for a course with an odd number of legs.

For "M" courses the start/finish line shall be between an orange flag on the race committee boat and a mark set approximately half way between the windward and leeward marks. The start/finish mark will not be a rounding mark of the course.



For other windward/leeward courses the starting line shall be between an orange flag on the race committee boat and a set mark that will also be the leeward mark.

The finish line shall be between the orange flag on the race committee boat and the leeward mark for a course with an even number of legs or the windward mark for a course with an odd number of legs. The approximate bearing and distance to the windward mark may be displayed on the race committee boat.

7. OBSERVING GOV'T BUOYS: Each of the following government buoys must be observed: C"3" South Dumpling, N"2" Flat Hammock, C"1" Pulpit Rock, N"4" West Clump, C"5" Clay Point, C"1W" Brooks Point, N"2W" Brooks Point (IODs only), and C"21" Middle Clump (IODs only). Except when rounded as a mark of the course, R"2" Dumpling Bell, must be observed. No other government buoys need be observed.

8. RESTRICTED AREAS: IODs and Bullseyes shall not enter or cross the line of their restricted areas indicated on Attachment A.

9. STARTING: Starting times will be as stated in the Yacht Club Racing Schedule. Starting lines will be set as described in SI 6. Races will be started by Rule 26 and each class will have a separate starting sequence. The RC will make a pre-warning repeated sound signal approximately one minute before each warning signal.

10. FINISHING: Finish lines will be as described in SI 6. If for any reason the race committee boat is not at the finish line each boat will finish abeam of the

finish mark and record its finish time and position relative to other finishers and report them to the RC as soon as possible.

11. RECALLS: Individual and General Recalls will follow the procedures in Rule 29.

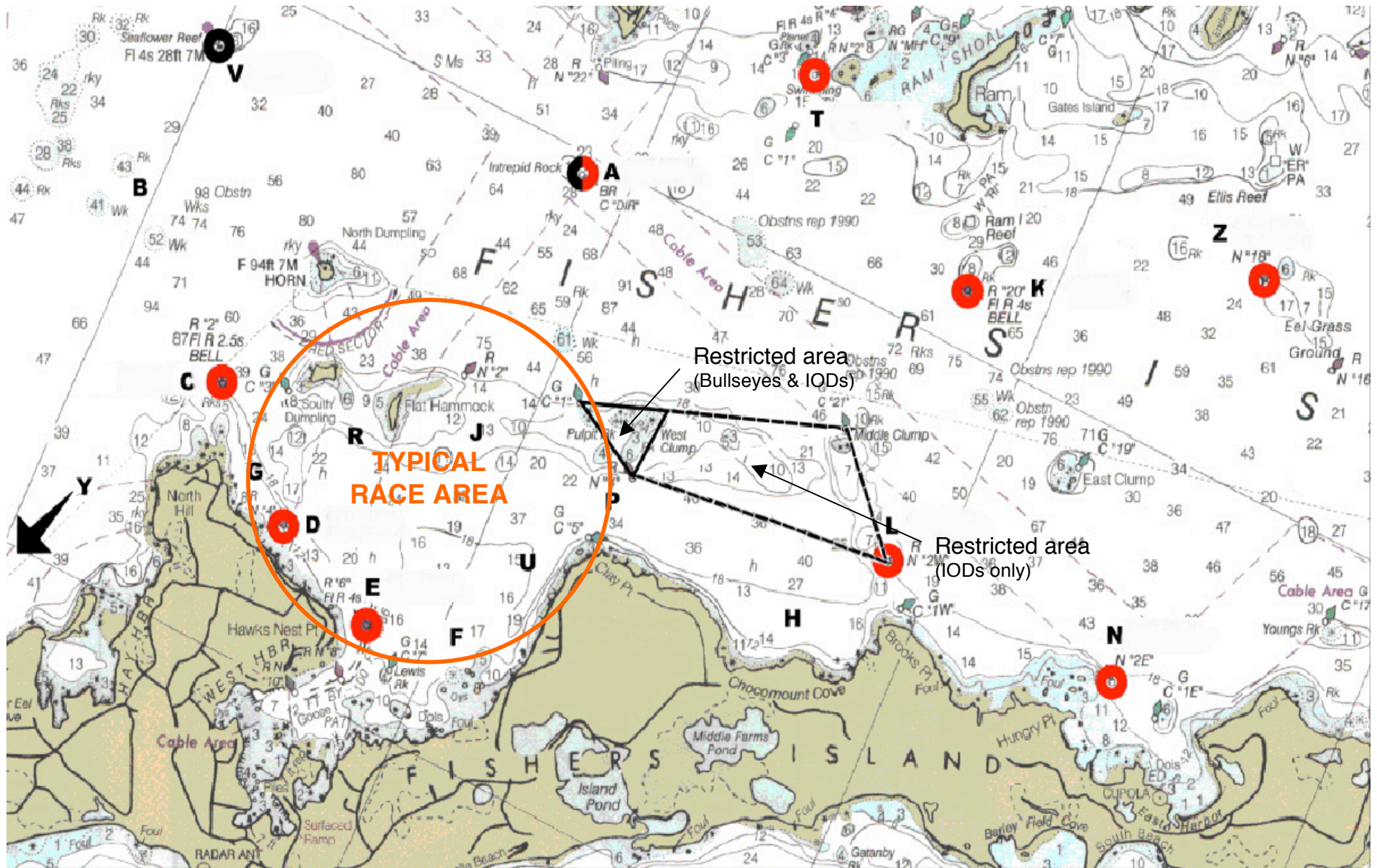
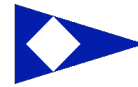
12. COURSE CHANGES: A course change prior to a warning signal will be signaled by code flag "L" displayed for two minutes. The flag may be accompanied by a repeated sound signal. A course change after the start will be signaled according to Rule 33.

13. TIME LIMIT: The first boat in each class must finish within three hours after the start of her class. Boats finishing more than one hour after the first boat finishes or after the time limit, whichever is later, will be scored as "did not finish."

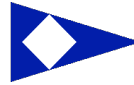
14. PROTESTS: Protests shall be made in accordance with rule 61, and written on forms available at the Fishers Island YC, where they must be lodged within 45 minutes of the arrival at the dock of the race committee. The protest committee will hear protests in approximately the order of receipt as soon as possible.

15. SCORING: The system for scoring each regatta or series will be as posted on the official notice board at the yacht club.

16. NO SPINNAKERS: Flag "Z" displayed before or with the starting signal means spinnakers shall not be flown in that race.



ATTACHMENT 'A'
RACING AREA



CODE FLAGS

	A		N
	B		O
	C		P
	D		Q
	E		R
	F		S
	G		T
	H		U
	I		V
	J		W
	K		X
	L		Y
	M		Z

PENNANTS

	1
	2
	3
	4
	5
	6
	7
	8
	9
	O
	ANSWERING PENNANT

REPEATERS

	FIRST SUBSTITUTE
	SECOND SUBSTITUTE
	THIRD SUBSTITUTE
	FOURTH SUBSTITUTE

SAMPLE COURSES

